

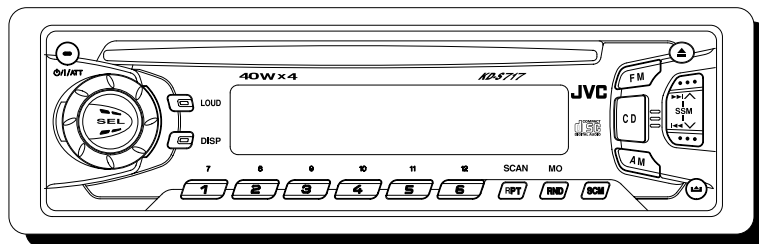
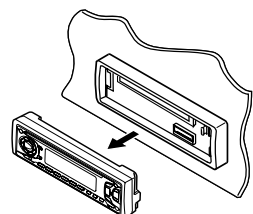
JVC

SCHEMATIC DIAGRAMS

CD RECEIVER

KD-S717

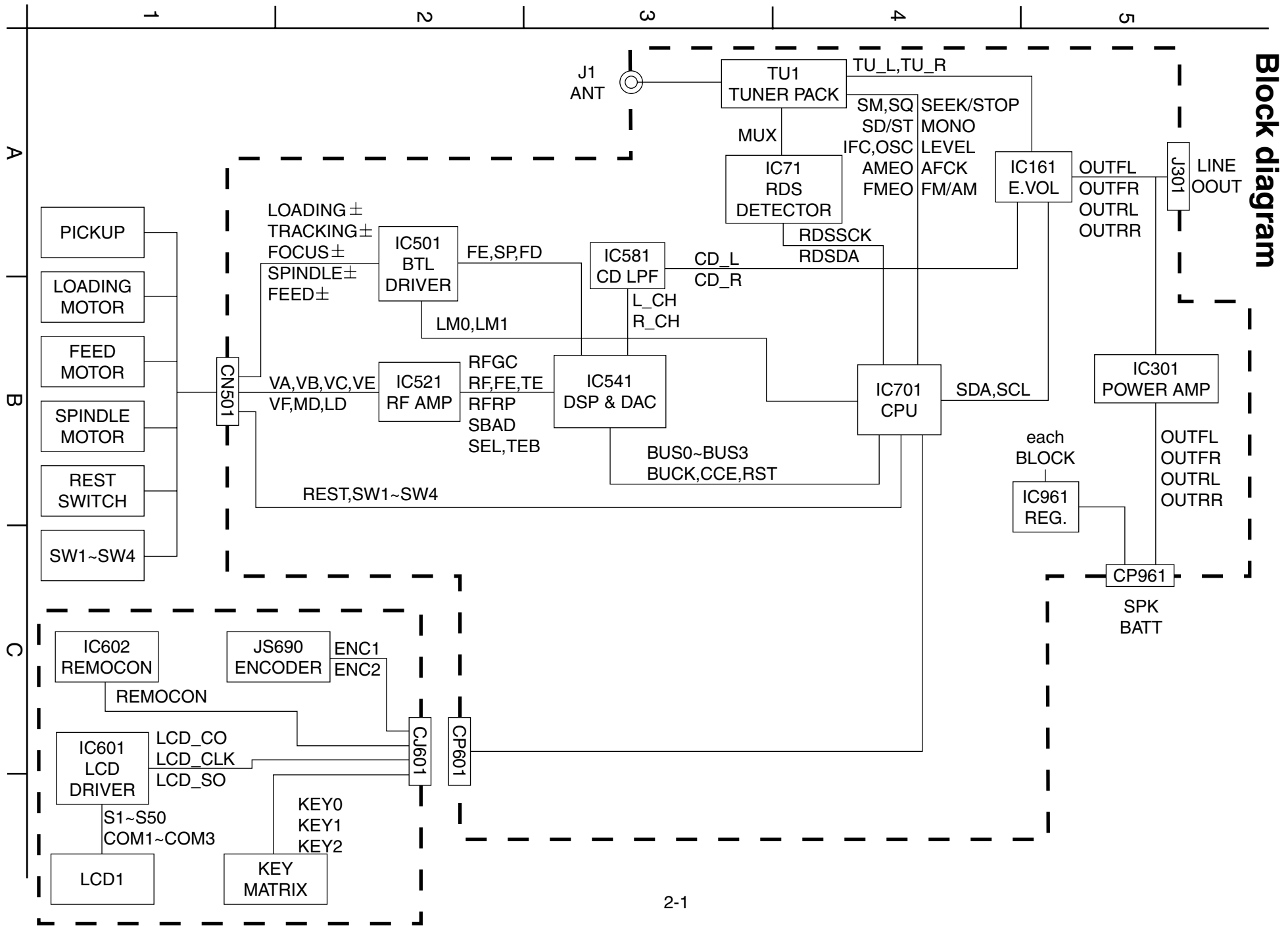
CD-ROM No.SML200102



Area Suffix
EE Russian Federation

Contents

Block diagram	2-1
Standard schematic diagrams	2-3
Printed circuit boards	2-6

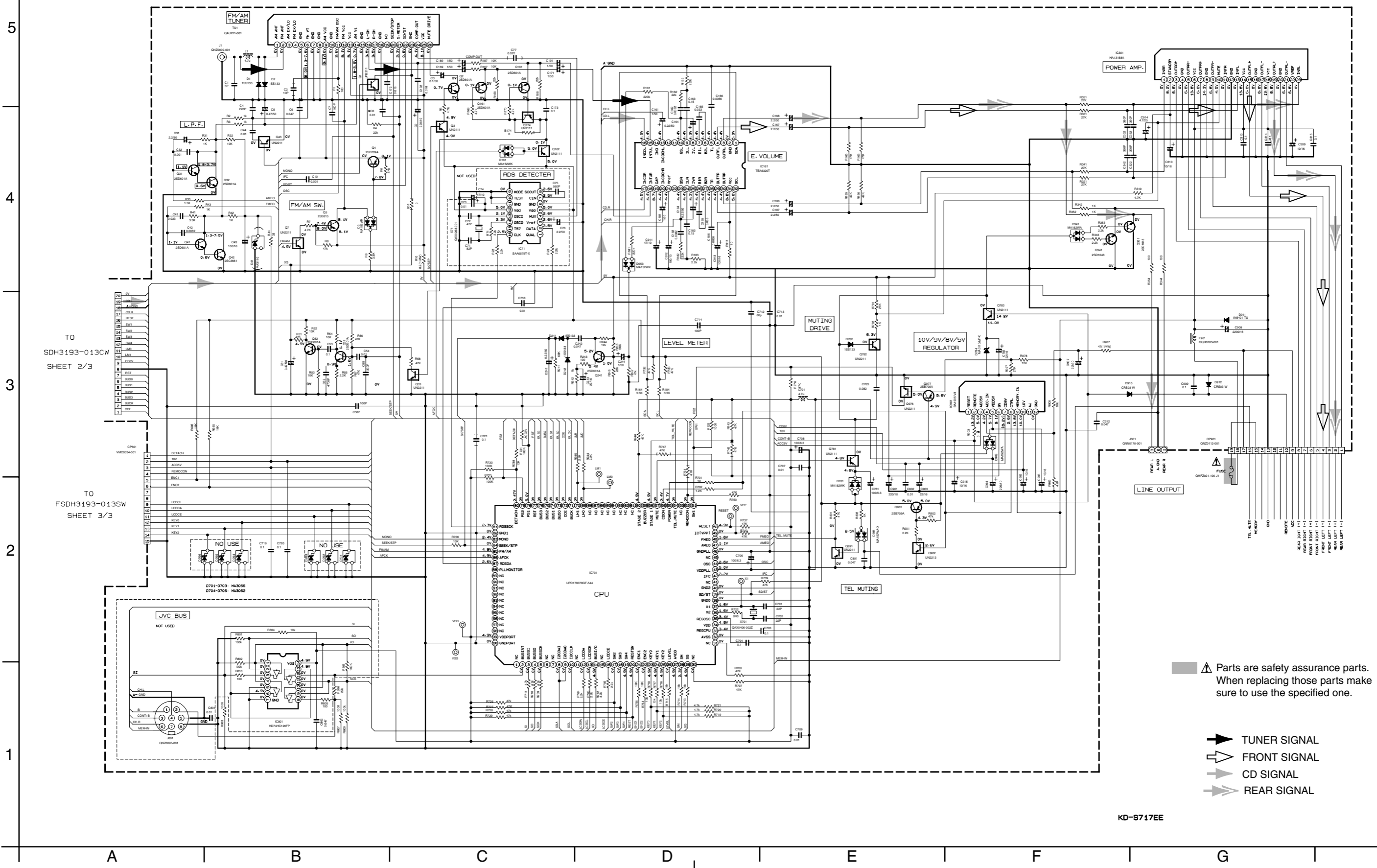
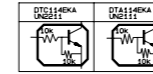


Block diagram

< MEMO >

■ Main amp section

- NOTES**
1. VOLTAGES ARE DC-MEASURED WITH A DIGITAL VOLT METER WITHOUT INPUT SIGNAL CONDITION—FM MODE. □ AM MODE. | CD MODE.
 2. UNLESS OTHERWISE SPECIFIED, ALL RESISTORS ARE 1/10W 5% METAL GLAZE RESISTOR. ALL CAPACITORS ARE 50V OR 25V CERAMIC CAPACITOR. ALL RESISTANCE VALUES ARE IN OHM. ALL CAPACITANCE VALUES ARE IN uF(P=PF). ALL E-CAPACITORS ARE SHOWN IN THE FORM OF CAPACITANCE(uF)/RATED VOLTAGE(V). TF — T.F. CAPACITOR



▲ Parts are safety assurance parts. When replacing those parts make sure to use the specified one.

- ▶ TUNER SIGNAL
- ▶ FRONT SIGNAL
- ▶ CD SIGNAL
- ▶ REAR SIGNAL

CD Servo section

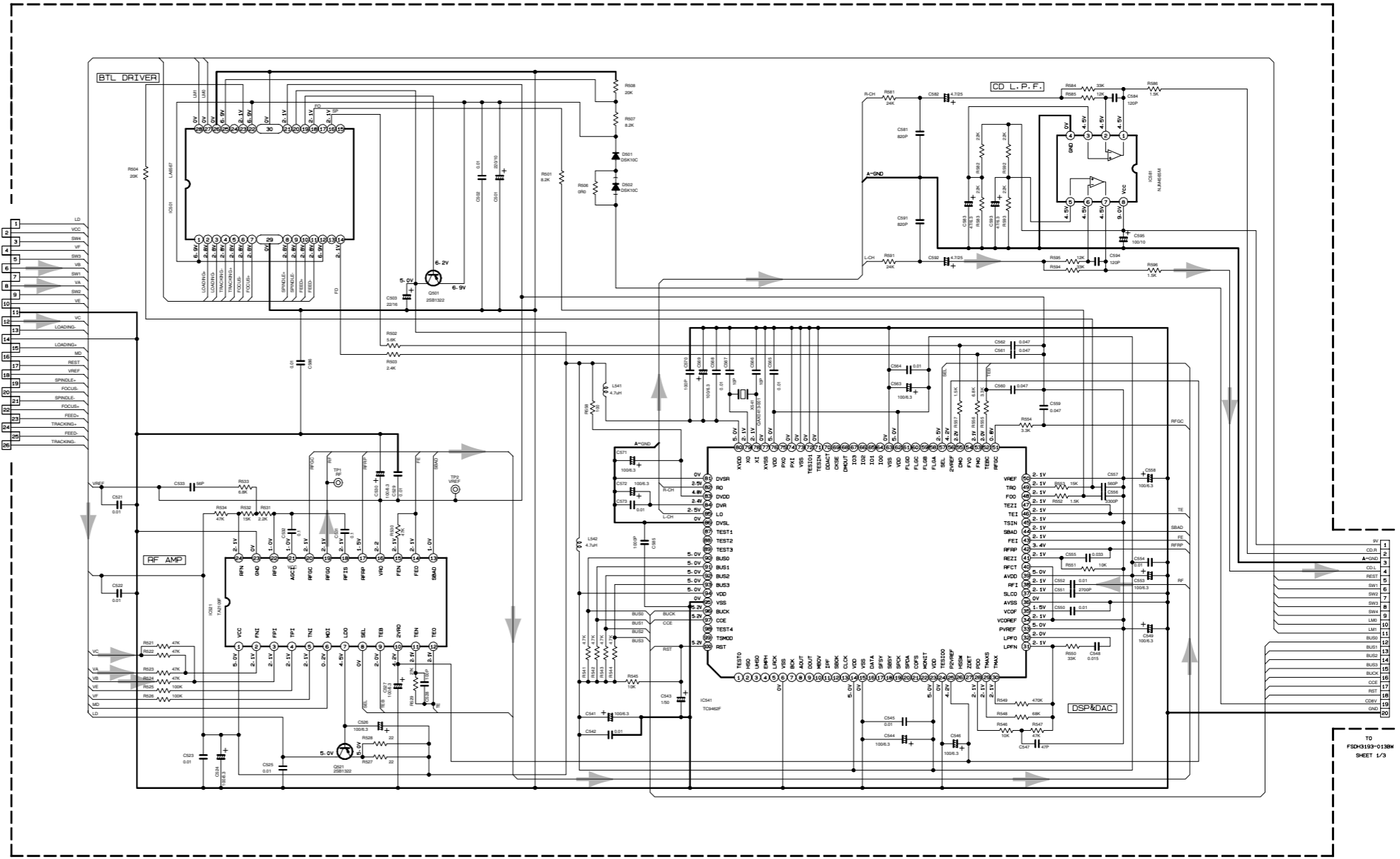
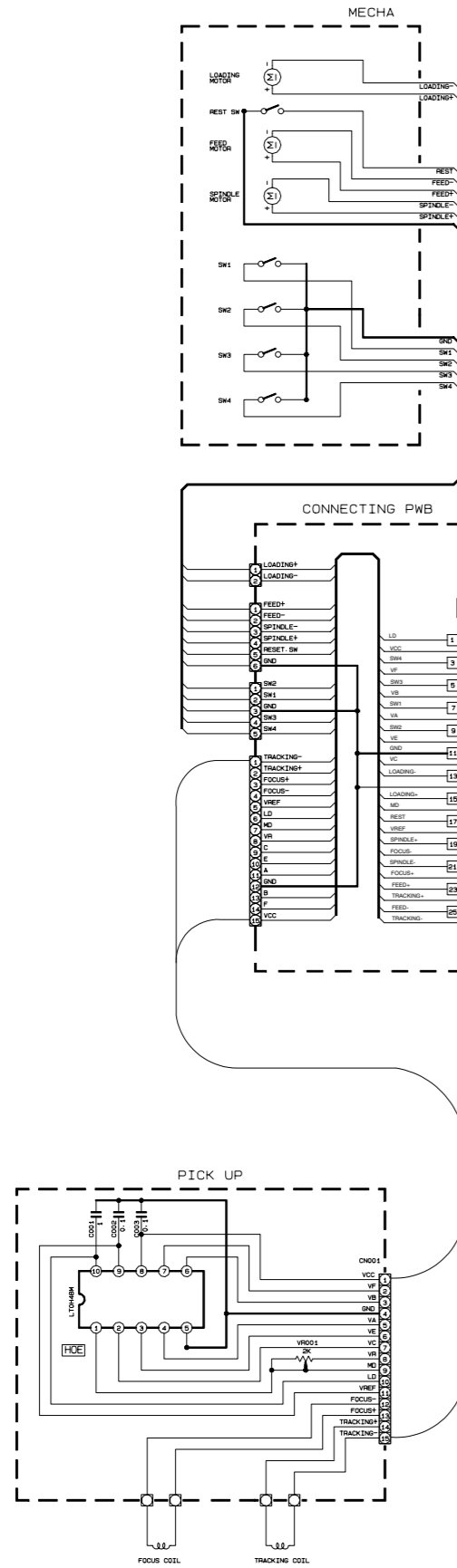
5

4

3

2

1



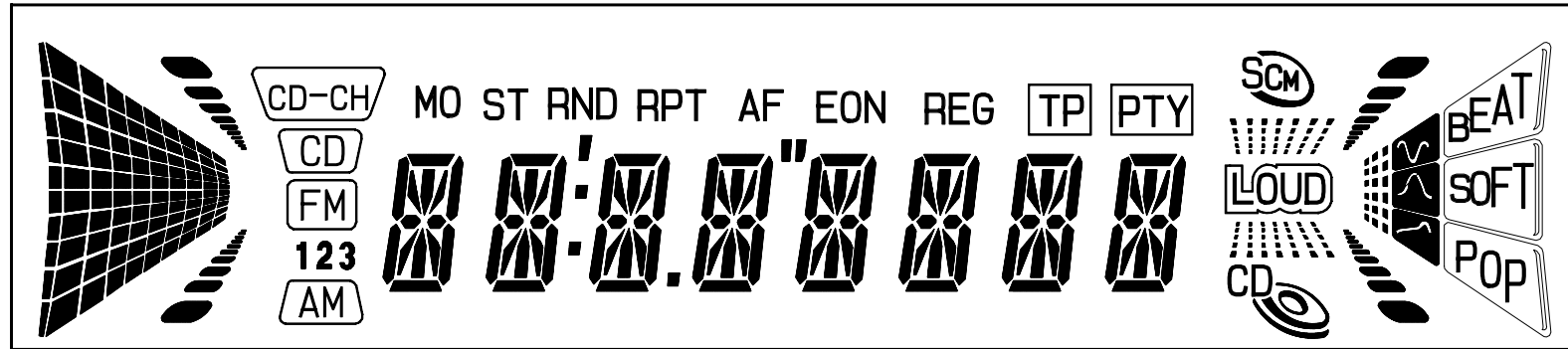
- NOTES
- UNLESS OTHERWISE SPECIFIED, ALL RESISTORS ARE 1/10W OR 1/4W ±5% METAL GLAZE RESISTOR. ALL CAPACITORS ARE 50V OR 25V CERAMIC CAPACITOR. ALL RESISTANCE VALUES ARE IN OHM. ALL CAPACITANCE VALUES ARE IN uF (p/pF). ALL E. CAPACITORS ARE SHOWN IN THE FORM OF CAPACITANCE(uF)/RATED VOLTAGE(V)
 - TF --- T. F. CAPACITOR
 - N --- N. F. CAPACITOR

➔ CD SIGNAL

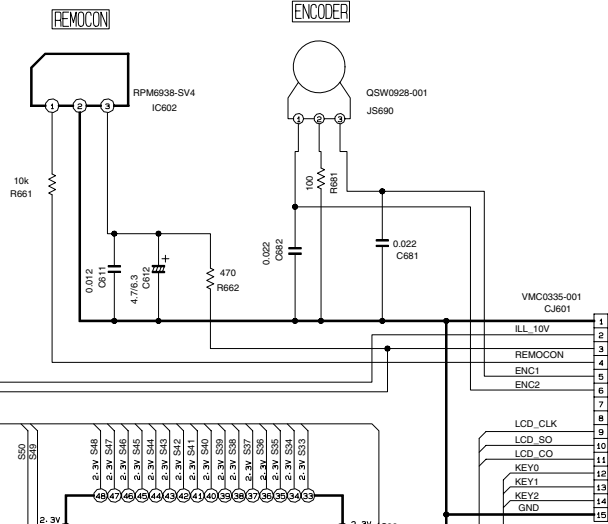
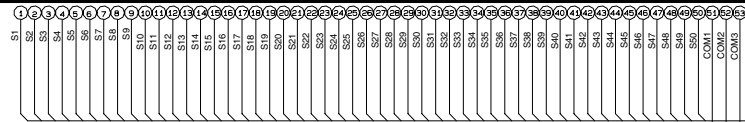
■ LCD & Key control section

5

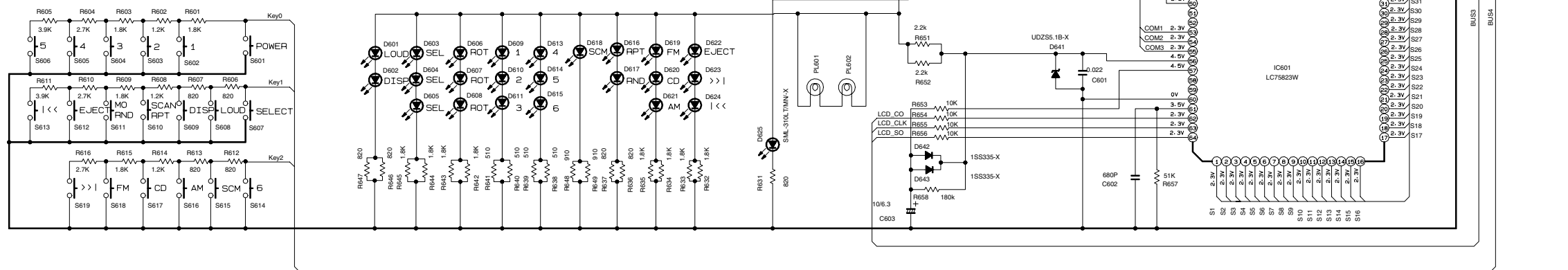
LCD DISPLAY



LCD1
QLD0162-001



3



KEY MATRIX

LIGHTING DISPLAY

LCD DRIVER

2

	GREEN LED LNJ308681/1-3/X	RED LED SML-310VT/JK/-X	AMBER LED SML-310DT/KL/-X	YELLOW LED SML-310YT/JKL/X	LAMP PL601/PL602
KD-S717EE	D601-D611 D613-D624	D618	NOT USED	NOT USED	IVORY QLL0033-003

INDONESIA SWITCH BOARD O/L

MODEL	SWITCH BOARD
KD-S717EE	KD-SWPCB-4

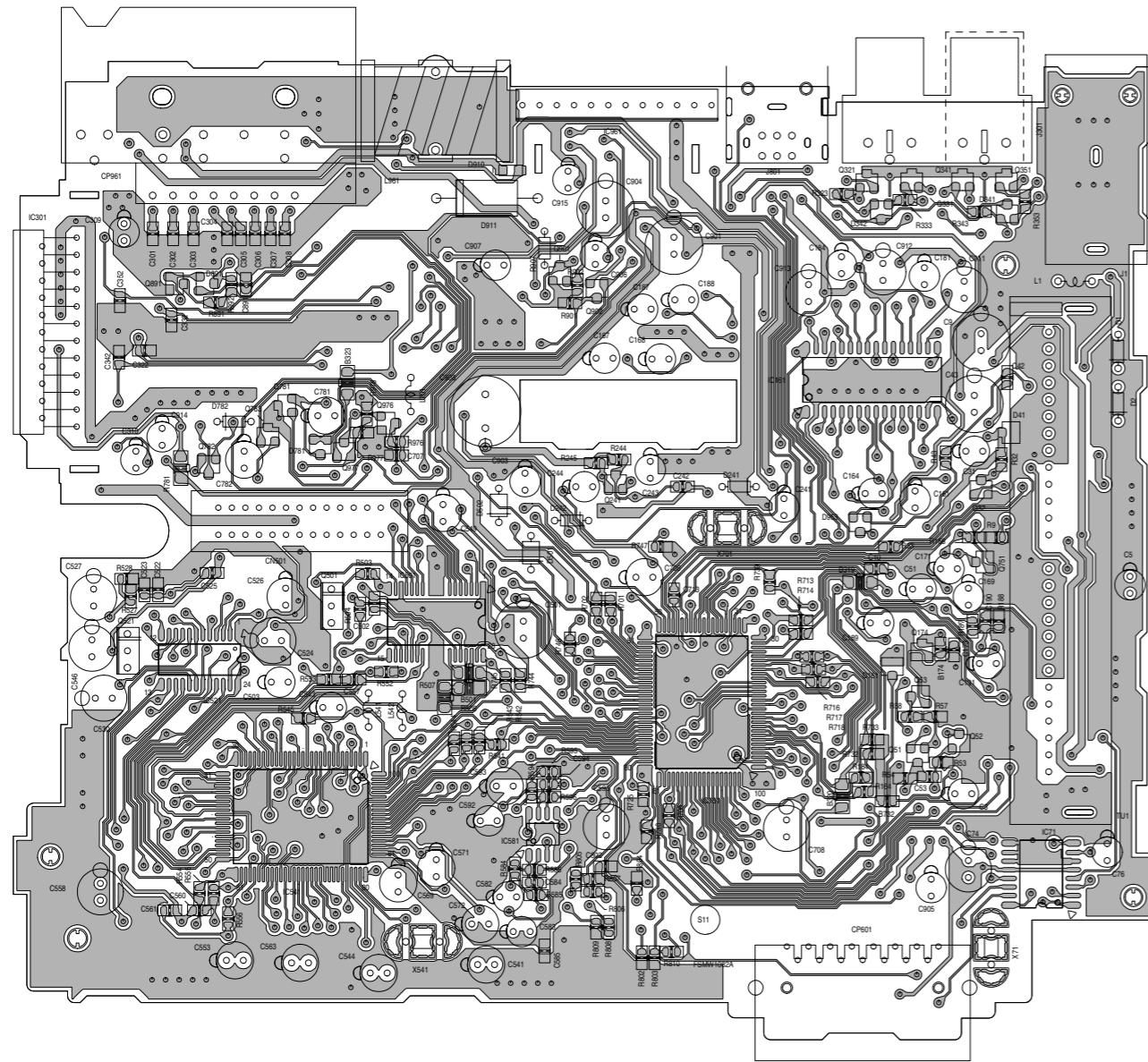
1

KD-S717EE

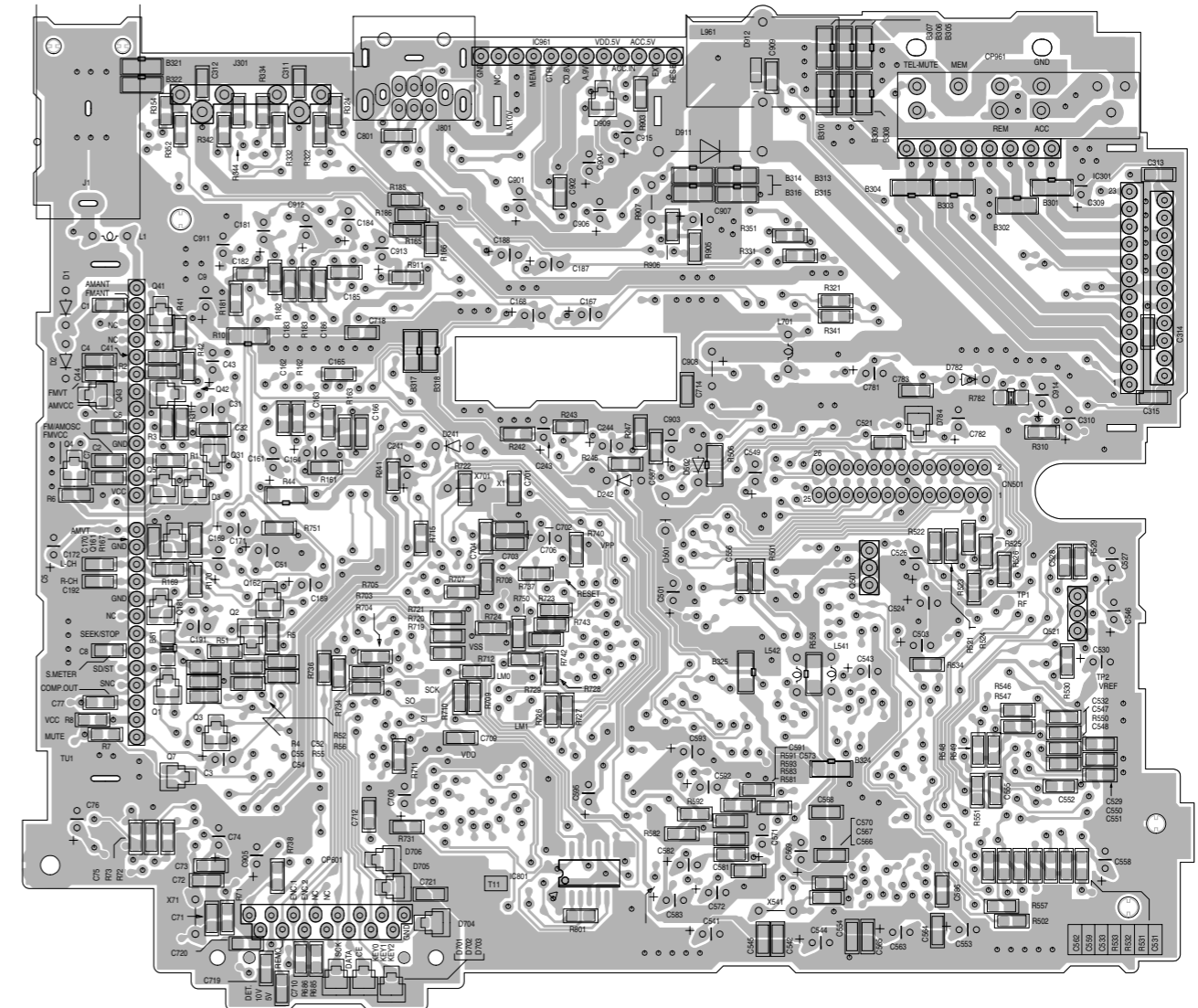
Printed circuit boards

■ Main board

(Forward side)



(Reverse side)



5
4
3
2
1

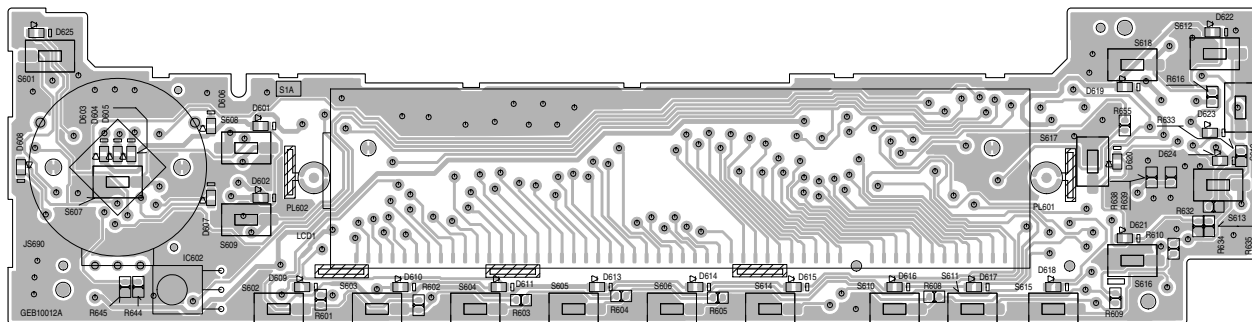
A B C 2-6 D E F G H

■ Front board

(Forward side)

5

4

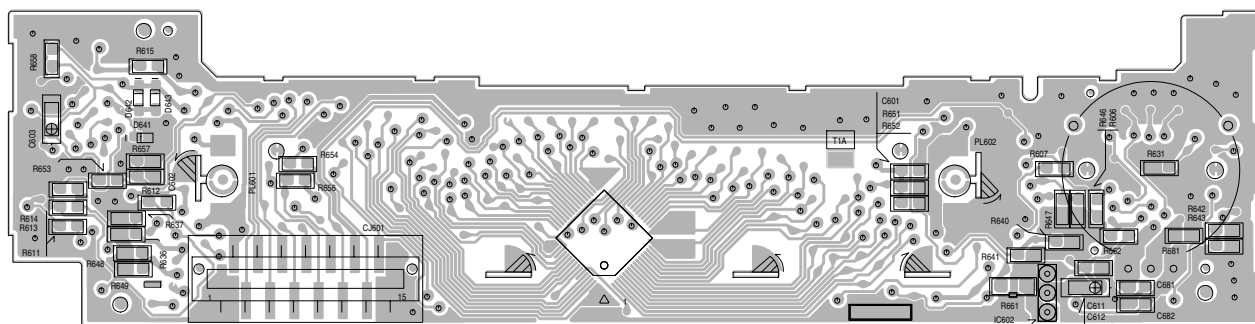


(Reverse side)

3

2

1



A

B

C

< MEMO >

JVC

VICTOR COMPANY OF JAPAN, LIMITED

MOBILE ELECTRONICS DIVISION

PERSONAL & MOBILE NETWORK BUSINESS UNIT. 10-1,1Chome,Ohwatari-machi,Maebashi-city,Japan